

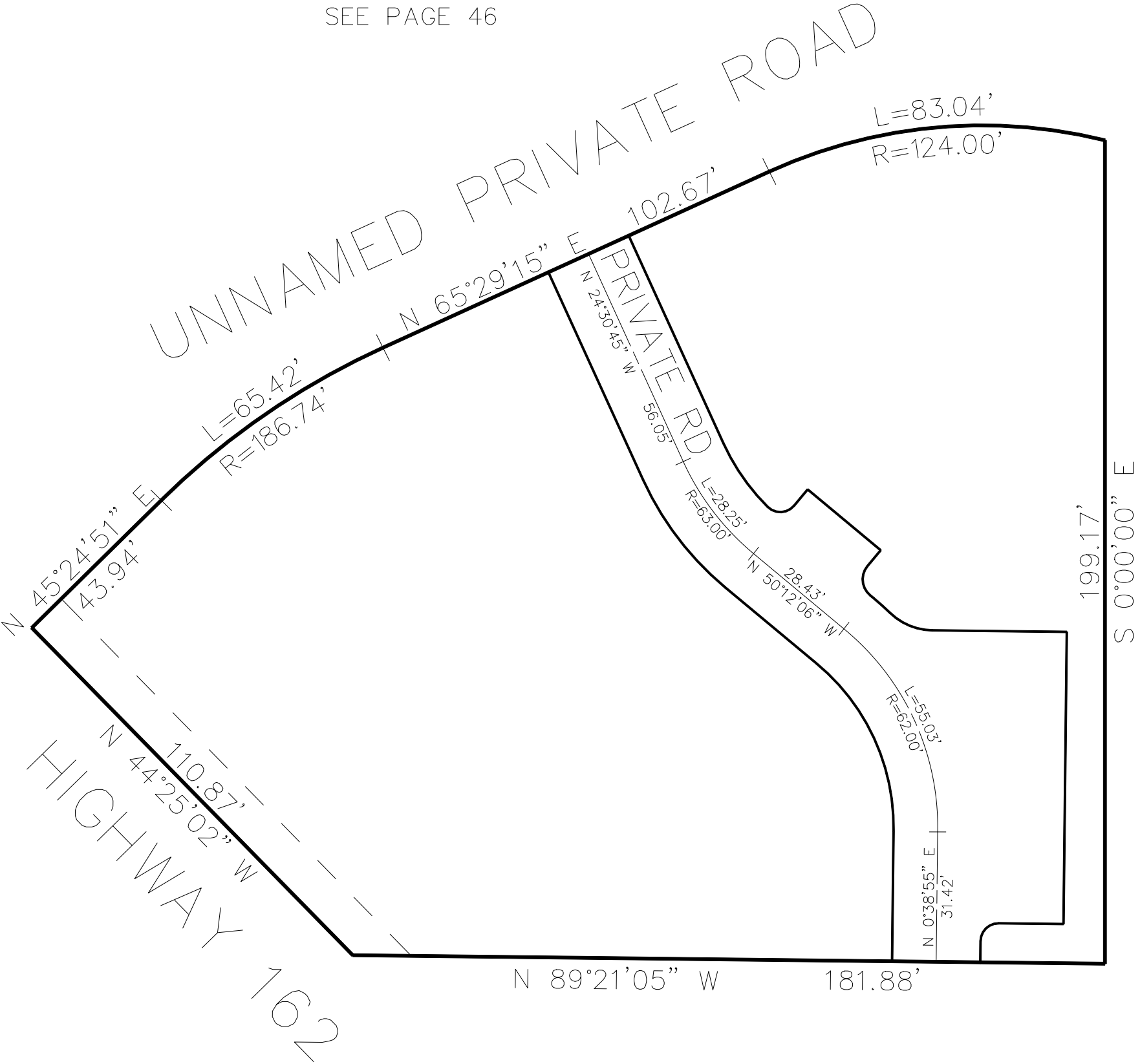
PART OF THE NW.1/4, OF SECTION 34, T.7N., R.1E., S.L.B. & M.  
LITTLE BEAR CONDOMINIUM LOT 3 1ST AMENDMENT

320

TAXING UNIT: 28

IN WEBER COUNTY  
SCALE 1" = 30'

SEE PAGE 46



SEE PAGE 154

UNIT	SERIAL #	OWNERSHIP
1	223200001	EDEN PROPERTIES LLC
2	223200002	OGDEN VALLEY PIZZA LLC
3	223200003	MADISON CONNECT LLC
4	223200004	BOON AUM LLC
5	223200005	PARAGON GROUP LLC
6	223200006	EDEN PROPERTIES LLC
7	223200007	EDEN PROPERTIES LLC
8	223200008	EDEN PROPERTIES LLC
C.A.	223200009	LITTLE BEAR CONDO LOT 3 1ST AMD OWNERS ASSN.

SEE PAGE 46

10' UTILITY & DRAINAGE EASEMENTS EACH  
SIDE OF PROPERTY LINES AS INDICATED  
BY DASHED LINES EXCEPT AS OTHERWISE  
SHOWN.

FOR COMPLETE ENG DATA SEE  
ORIGINAL DEDICATION PLAT IN  
BOOK 75, PAGE 51-53 OF RECORDS.